



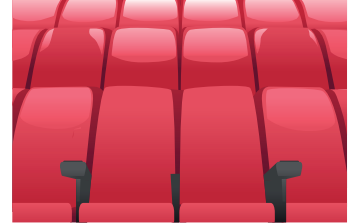
NAME _____ DATE _____

APOSTROPHE (POSSESSIVE NOUNS)

Apostrophe (') with 's' is used to express possession when added to nouns.
Apostrophe is added after plurals to show their possession.

Underline the word that expresses possession with apostrophe and add apostrophe to show possession.

1) The movie theatres seats are not comfortable.



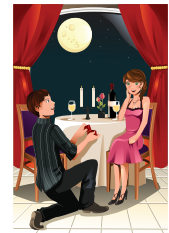
Answer: _____.

2) We are pleased with Lisas tennis game.



Answer: _____.

3) My sisters marriage day is celebrated at square park



Answer: _____.

4) The magicians box is full of puzzles.



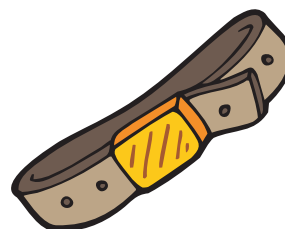
Answer: _____.

5) All the monkeys games are fun to watch.



Answer: _____.

6) Peters belt is made of leather.



Answer: _____.