



NAME _____ DATE _____

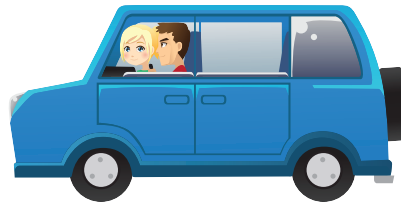
SENTENCES (PUNCTUATE & IDENTIFY SENTENCES)

Read and note the closing punctuation marks to the following. Write the type of sentence in the space given. You may write "D" for Declarative. "Im" for Imperative, "In" for interrogative and "E" for exclamatory sentences.

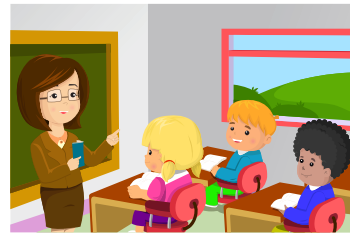
1) Ah, but you are not true ! ____



2) Teach me how to drive . ____



3) Who is the black sheep in your class ? ____



4) Aha! This is the best day for me ! ____



5) Show me the way to post office . ____



6) No one can believe a liar . ____

