

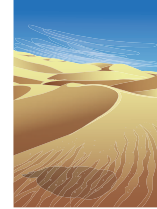


NAME _____ DATE _____

SPELLING

Look at the jumbled letters given below. Try to guess the words with the help of hints / meanings given. Rearrange the jumbled letters to form. Correct spelling and write the same on the blank given for each question.

1) RDETES --- We find sand everywhere --- _____.



2) DFIREN --- You like him --- _____.



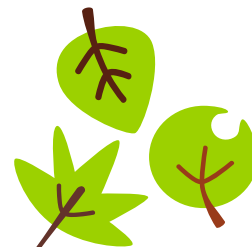
3) COTRDO --- Sick people go to him --- _____.



4) NCTHIKE --- A place to prepare food --- _____.



5) REGNE --- Leaves are in this color --- _____.



6) UBMNSER --- You can count them --- _____.

