



NAME _____

DATE _____

ADDITION OR SUBTRACTION

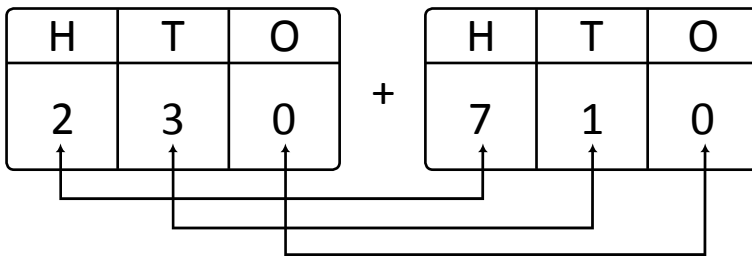
Solve using arrow way or mental math. Use scratch paper if needed.

1) $230 + 710 =$ _____

Arrow way:



Mental math: Place value totals.



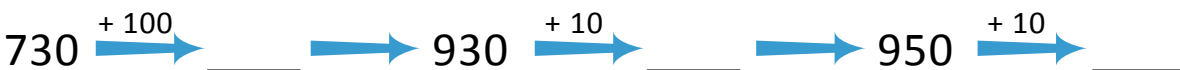
Hundreds = $\underline{\hspace{1cm}} + \underline{\hspace{1cm}} = 9$

Tens = $3 + 1 = \underline{\hspace{1cm}}$

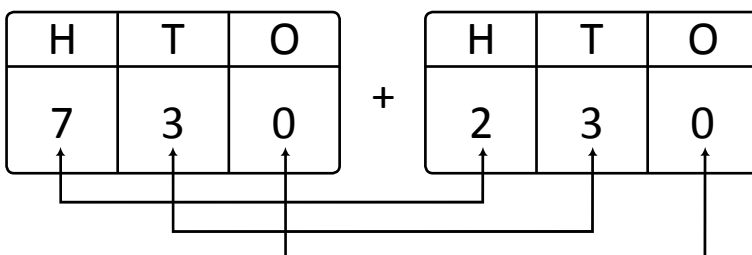
$230 + 710 =$ $\underline{\hspace{1cm}}$ hundreds + $\underline{\hspace{1cm}}$ tens = $\underline{\hspace{2cm}}$.

2) $730 + 230 =$ _____

Arrow way:



Mental math: Place value totals.



Hundreds = $\underline{\hspace{1cm}} + \underline{\hspace{1cm}} = 9$

Tens = $3 + 3 = \underline{\hspace{1cm}}$

$730 + 230 =$ $\underline{\hspace{1cm}}$ hundreds + $\underline{\hspace{1cm}}$ ten = $\underline{\hspace{2cm}}$.