



NAME _____

DATE _____

ADDITION OR SUBTRACTION

Solve using arrow way or mental math. Use scratch paper if needed.

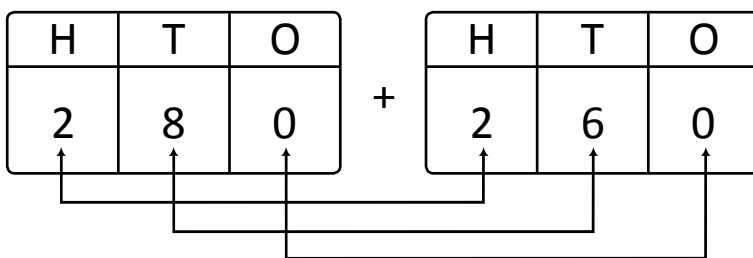
1) $280 + 260 = \underline{\hspace{2cm}}$

Arrow way:

$$280 \xrightarrow{+100} \underline{\hspace{1cm}} \xrightarrow{\hspace{1cm}} 480 \xrightarrow{+10} \underline{\hspace{1cm}} \xrightarrow{\hspace{1cm}} 500 \xrightarrow{+10} \underline{\hspace{1cm}} \xrightarrow{\hspace{1cm}} 520$$

$$\xrightarrow{+10} \underline{\hspace{1cm}} \xrightarrow{\hspace{1cm}} 540$$

Mental math: Place value totals.



Hundreds = $\underline{\hspace{1cm}} + \underline{\hspace{1cm}} = \underline{\hspace{1cm}}$

Tens = $\underline{\hspace{1cm}} + \underline{\hspace{1cm}} = 14$

= 10 tens + 4 tens

= $\underline{\hspace{1cm}}$ hundred + $\underline{\hspace{1cm}}$ tens

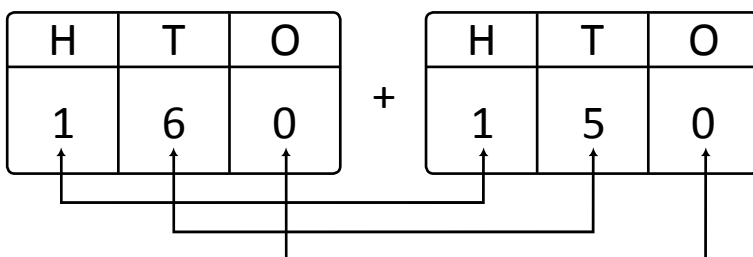
$280 + 260 = \underline{\hspace{1cm}}$ hundreds $\underline{\hspace{1cm}}$ tens = $\underline{\hspace{2cm}}$.

2) $160 + 150 = \underline{\hspace{2cm}}$

Arrow way:

$$160 \xrightarrow{+100} \underline{\hspace{1cm}} \xrightarrow{\hspace{1cm}} 270 \xrightarrow{+10} \underline{\hspace{1cm}} \xrightarrow{\hspace{1cm}} 290 \xrightarrow{+10} \underline{\hspace{1cm}} \xrightarrow{\hspace{1cm}} 310$$

Mental math: Place value totals.



Hundreds = $1 + 1 = \underline{\hspace{1cm}}$

Tens = $6 + 5 = \underline{\hspace{1cm}}$

= $\underline{\hspace{1cm}}$ tens + 1 ten

= 1 hundred + 1 ten

$160 + 150 = 3$ hundreds 1 ten = $\underline{\hspace{2cm}}$.