



NAME _____

DATE _____

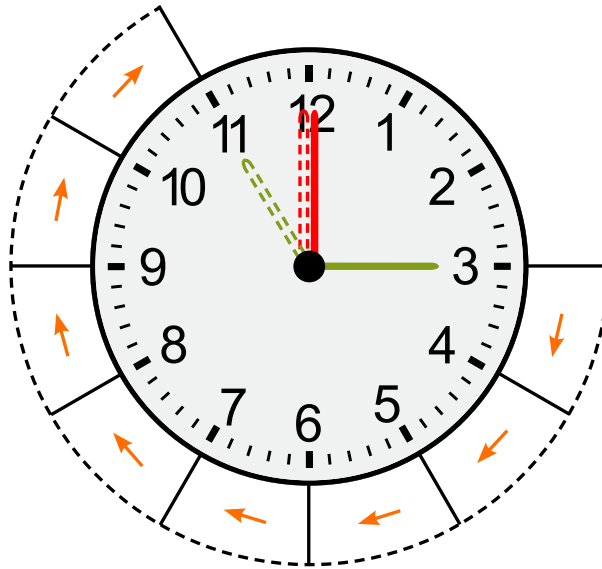
APPLICATION OF FRACTIONS TO TELL TIME

Solve elapsed time problems involving whole hours and a half hour.

1) How much time has passed?

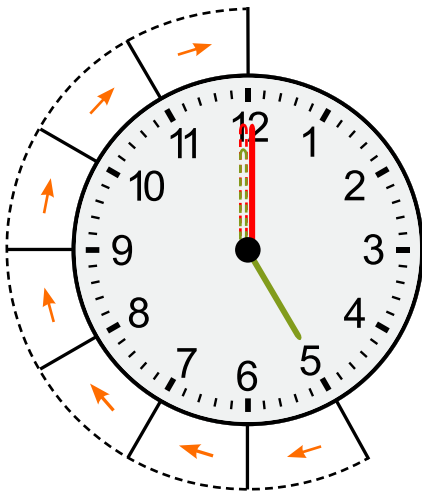
a) 3:00 p.m. \longrightarrow 11 p.m. : _____.

Hours = 3 $\xrightarrow{+1}$ 4 $\xrightarrow{+1}$ 5 $\xrightarrow{+1}$ $\xrightarrow{+1}$ 7 $\xrightarrow{+1}$ 8 $\xrightarrow{+1}$ $\xrightarrow{+1}$ $\xrightarrow{+1}$



b) 5:00 a.m. \longrightarrow 12:00 p.m. (Noon) : _____.

Hours = 5 $\xrightarrow{+1}$ $\xrightarrow{+1}$ $\xrightarrow{+1}$ $\xrightarrow{+1}$ 8 $\xrightarrow{+1}$ $\xrightarrow{+1}$ $\xrightarrow{+1}$ $\xrightarrow{+1}$ 12



c) 9:30 a.m. \longrightarrow 7:30 p.m. : _____.

